



# MONTHLY MEMBERSHIP PROGRESS REPORT

Results as of: 4/30/2015

Multiple District 3

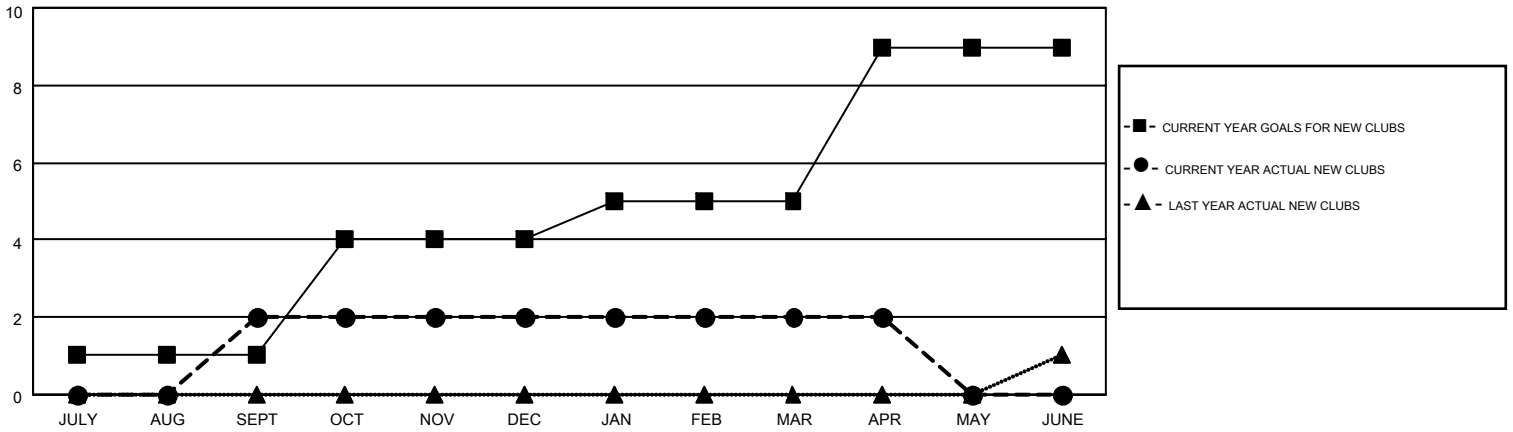
LOCATION: OKLAHOMA

GMT: HAL GRIFFIN

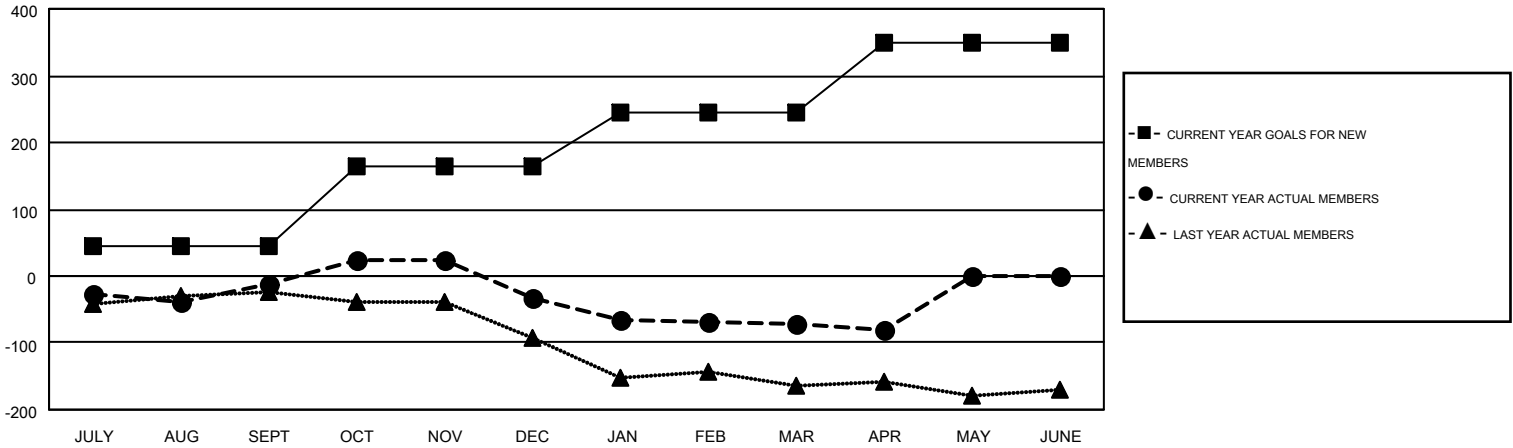
GMT CA 1

Clubs					Members				
RESULTS FOR 2014-2015					RESULTS FOR 2014-2015				
QUARTER	NEW CLUB GOAL	NEW CLUBS	DROPPED CLUBS	NET GAIN/LOSS	QUARTER	NEW MEMBER GOAL	CHARTER AND NEW MEMBERS ADDED	DROPPED MEMBERS	NET GAIN/LOSS
JULY/AUG/SEPT	1	2	1	1	JULY/AUG/SEPT	46	167	178	-11
OCT/NOV/DEC	3	0	2	-2	OCT/NOV/DEC	118	122	143	-21
JAN/FEB/MAR	1	0	0	0	JAN/FEB/MAR	82	124	163	-39
APR/MAY/JUNE	4	0	0	0	APR/MAY/JUNE	103	49	59	-10

GOALS AND ACTUAL NEW CLUBS CUMULATIVE



GOALS AND ACTUAL MEMBERS CUMULATIVE



DROPPED CLUBS: 3	123 CLUBS OF 175 ADDED 1 OR MORE NEW MEMBERS	<u>GENDER DISTRIBUTION</u>	
		MALE	3,122 (70.70%)
<u>DROPPED MEMBERS</u>		FEMALE	1,294 (29.30%)
DECEASED	50	FAMILY UNIT MEMBERS 636	
CLUB CANCELLED	32	HEAD OF HOUSEHOLD 309	
OTHER	461	NON-HEAD OF HOUSEHOLD 327	
TOTAL	543		

[CLICK HERE FOR HEALTH ASSESSMENT DATA](#)